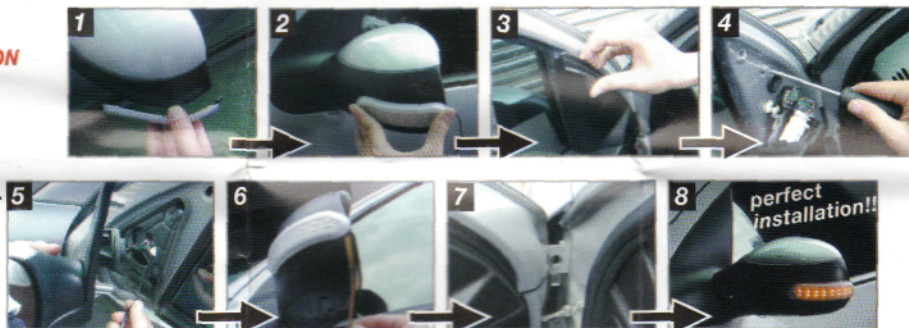


## Installation A

### A. NEED TO TAKE APART BACK MIRROR SITUATION

1. Please bend the lamp as same curve as mirror
2. Stick lamp on mirror firmly.
3. Take apart the interior mirror holder.
4. Loose screw and take apart the mirror.
5. Insert the wire through the hole of mirror holder.
6. Use double tape to fix and hide wire under the mirror.
7. Pull the wire to engine room and connect it with parking light.
8. Perfect installation.



## Installation B

### B. NO NEED TO TAKE APART BACK MIRROR SITUATION

1. Please bend the lamp as same curve as mirror
2. Stick lamp on mirror firmly.
3. Use double tape to fix and hide wire under the mirror.
4. Stick wire along the mirror to seam of door side
5. Pull the wire to engine room and connect it with parking light.
6. Perfect installation.
7. Still can see the light from backside.
8. Perfect installation.

